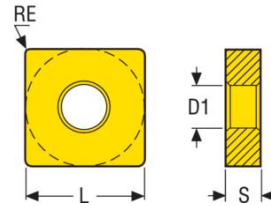
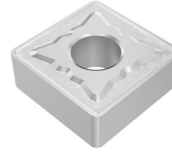


SNMG250924-MR7 TP3501

GDG code A41 - TURNING ISO-P CARBIDE/CERMET
Item number 03094155

Minimum sales quantity: 10

Name	Description	Value
AN	clearance angle major	0.0 deg
Barcode	Product barcode	94155030001004
CEDC	cutting edge count	8
D1	fixing hole diameter	9.1 mm
EPSR	insert included angle	90.0 deg
Gradetype	Gradetype	Carbide CVD
IC	inscribed circle diameter	25.40 mm
IH	Insert hand	Neutral
L	Theoretical cutting edge length	25.40 mm
LE	cutting edge effective length	23.00 mm
RE	corner radius	2.40 mm
S	Insert thickness	9.52 mm
SC	Insert shape code	S
SSC	Insert seat size code	25
Weight	Net weight	0.069 kg



Illustrations shown may vary from actual product