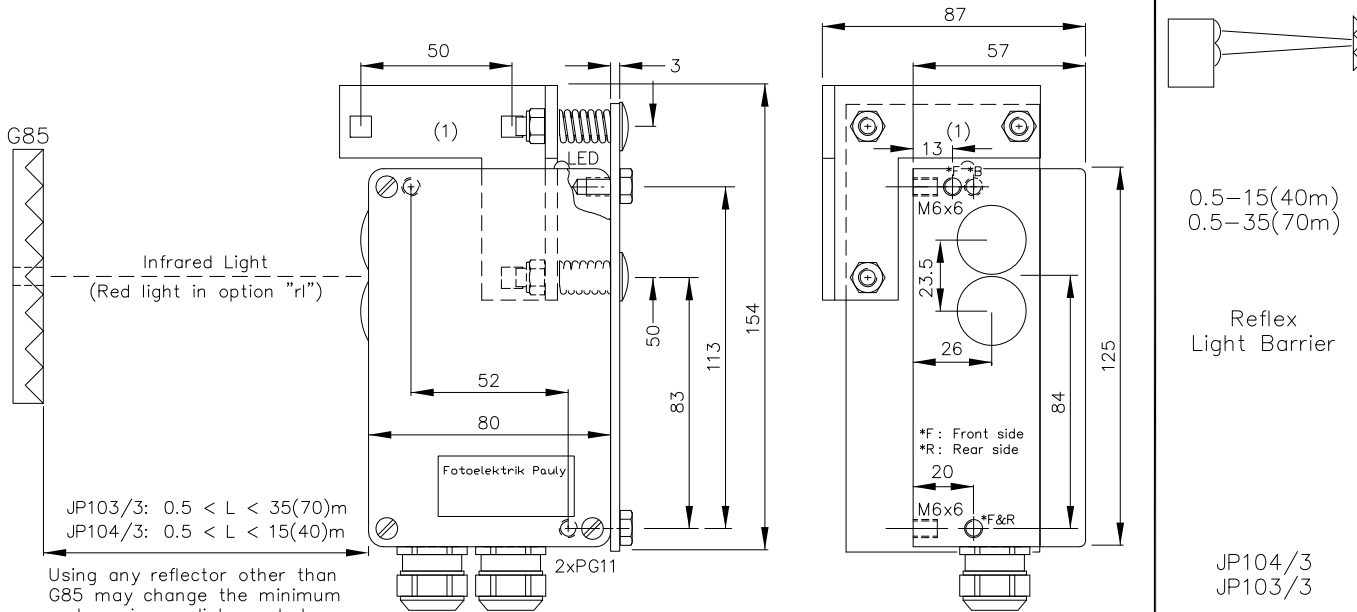
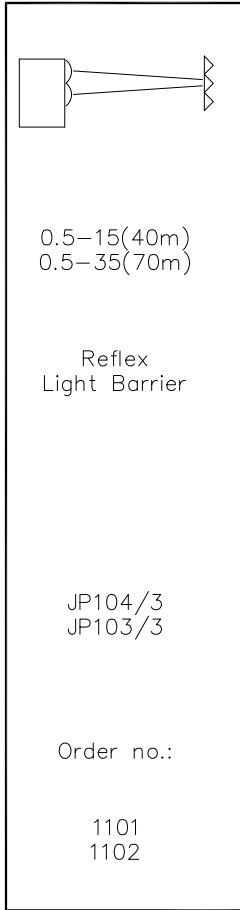


(Infra-)Red-Light Reflex Light Barrier Types JP104/3 & JP103/3

0.5-15(40m)
0.5-35(70m)

Reflex Light Barrier

JP104/3
JP103/3

Order no.:
1101
1102

Technical characteristics of minimum type:

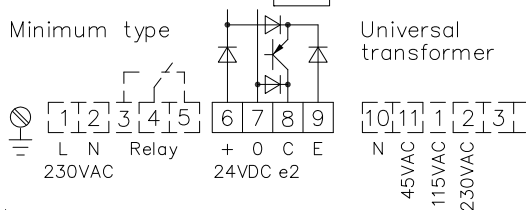
Housing	Al-Cast
Weight	approx. 700g
Protection mode	IP65
Connection	Terminal strip
Supply	24VDC/50mA without load
Output	pnp 60mA s.-c.-prot., e2
Signal mode	bright-/darkswitching, selectable
Transmitter light	GaAs 880nm, invisible
Steady light	JP103/3: >80kLx
resistance	JP104/3: >100kLx
Interference suppress.	Force synchronization
Light beam diameter	approx. 130mm/10m
Access time	<12ms/Switch transition
Switching rate	electron.: 40/s; Relay: 10/s
Switch indicator	LED
Ambient temperatur	-25...+60°C

Accessories:

- Reflectors
- Diaphragms
- Adjustment flange JF26H (1)
- Heavy adjustment flange R26SH
- Elbow tube adjustment AD26SS1 or AD26SS2
- Cooling water flange KW26
- Anti dust tube TUB75 with adapter plate
- Integrated protection system KJT.. or KRT26*

* Including: cooling by water, adjustment, anti dust tube (optional: diaphragms, optical filter)

Connection diagram:



Features:

- Connection: 3+1 pin Plug stH4, 4 pin Plug stLU4, 4+1 pin Plug stA5, 6+1 pin Plug stBi7, 5+1 wire No.-Cable K6
- Supply: 230V, 110...120V, 42...48V, 24VAC or 230/115/45VAC with universal transformer
- Output: Relay 250VAC/10A, 2500VA, 1xCh., R npn 60mA s.-c.-prot., e3; Optocoupler 60V/50mA, e1 if req. 2xe2 or 2xe3 or antival. e4 or e5
- Access time: "q": <2ms/Switch transition
- Switching rate: "q": 300/s, Relay: 10/s
- Time delay: 0...10s, switching-on-off-delay, separately adjustable, z10
- Level indicator: DIANA, i
- Heat-protected transducer system, pl
- Transmitter light: Red light 650nm, visible light spot, rl
- Transformer must be fitted with increased resistance to shocks and vibrations, tr
- If using cooling water flange, then milled wall, y
- JV103.. or JV104.. : Pollution warning output
- JU103.. or JU104.. : 'intelligent' Pollution warning output

1101 DE (29.01.98 tb) (13.04.05 m)
E_1101_1 (26.10.98 tb) 11.06.13 tb
(18.07.94 tb) (03.07.02 tb)
(03.02.95 tb) (18.02.05 m)